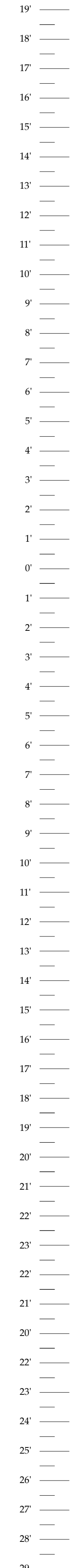




Shakespeare Festival Set
October 2019
Theatre South Carolina / University of South Carolina
Producer / Director: Robert Richmond
Festival Stage Design: Jim Hunter



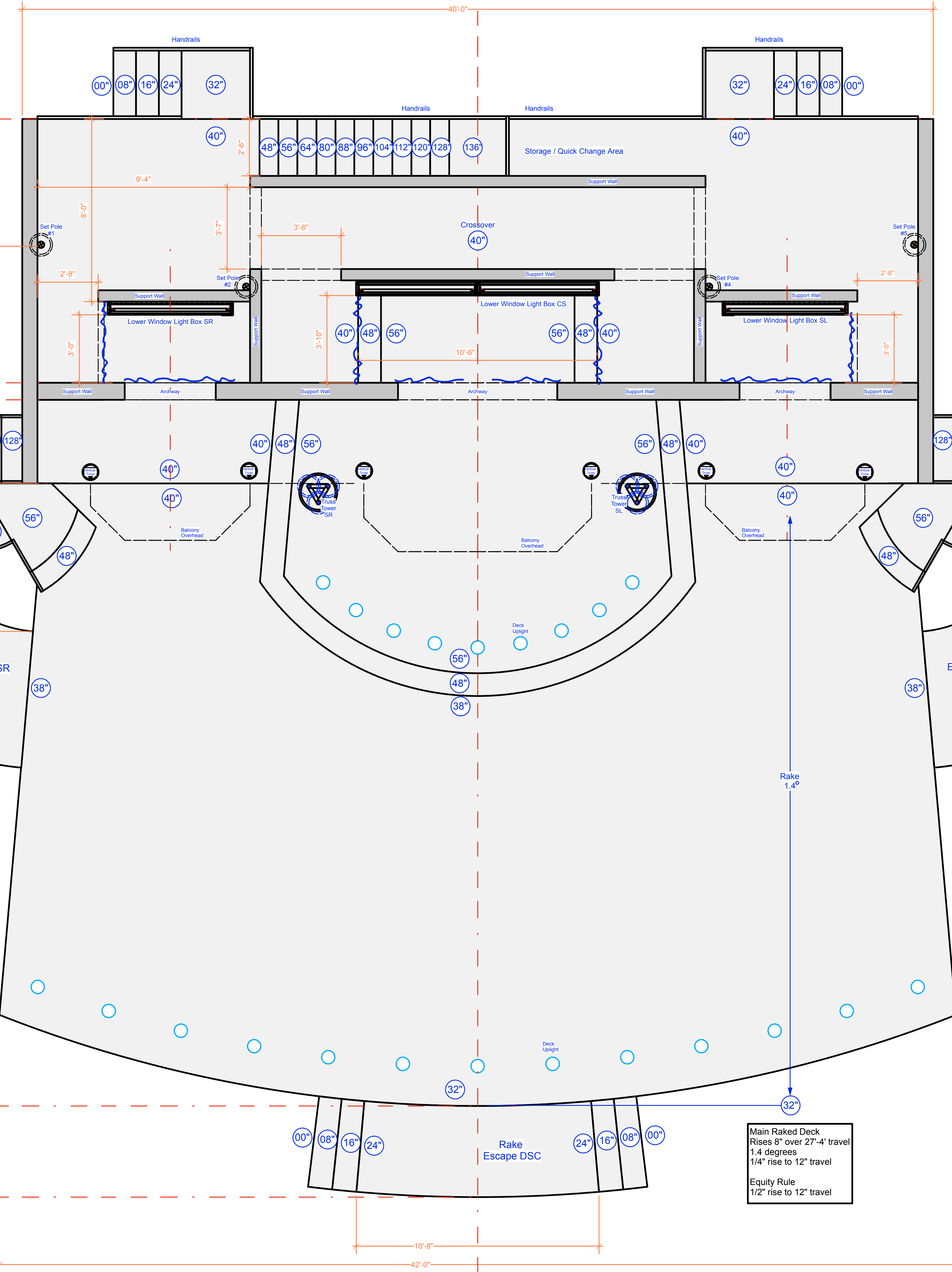
NOTE:
These design drawings show the final appearance of elements and do not imply any construction methods. Issues of structural integrity and safety reside exclusively with the producing organization. Compliance with federal, state, and local regulations are the responsibility of the producing organization.

US Edge of 48" Level Deck

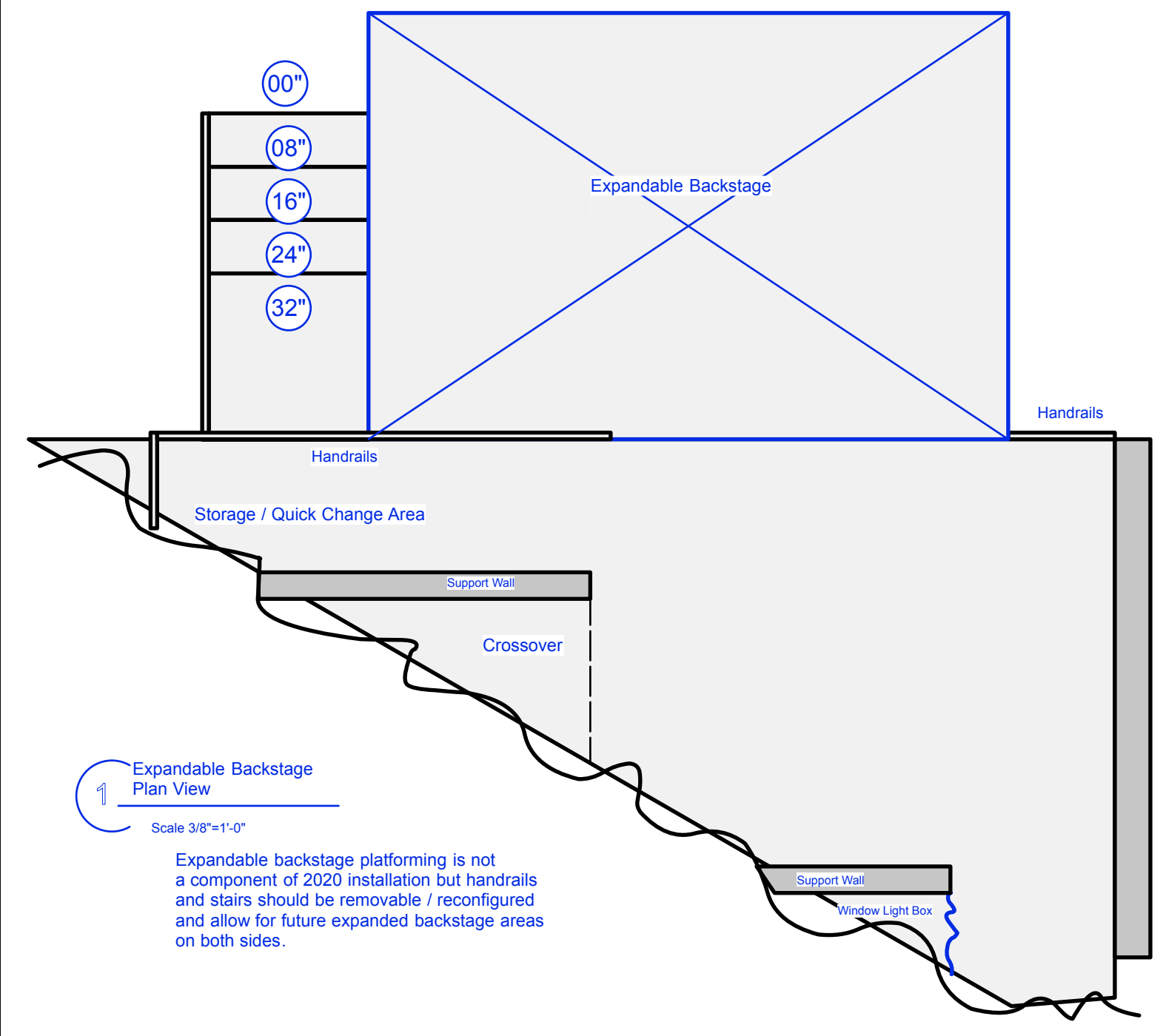
DS Edge of 48" Level Deck

DS Edge of Raked Deck

DS Limit of Set



Main Raked Deck
Rises 8" over 27'-4" travel
1.4 degrees
1/4" rise to 12" travel
Equity Rule
1/2" rise to 12" travel



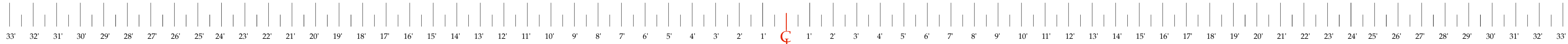
1 Expandable Backstage Plan View
Scale 3/8"=1'-0"

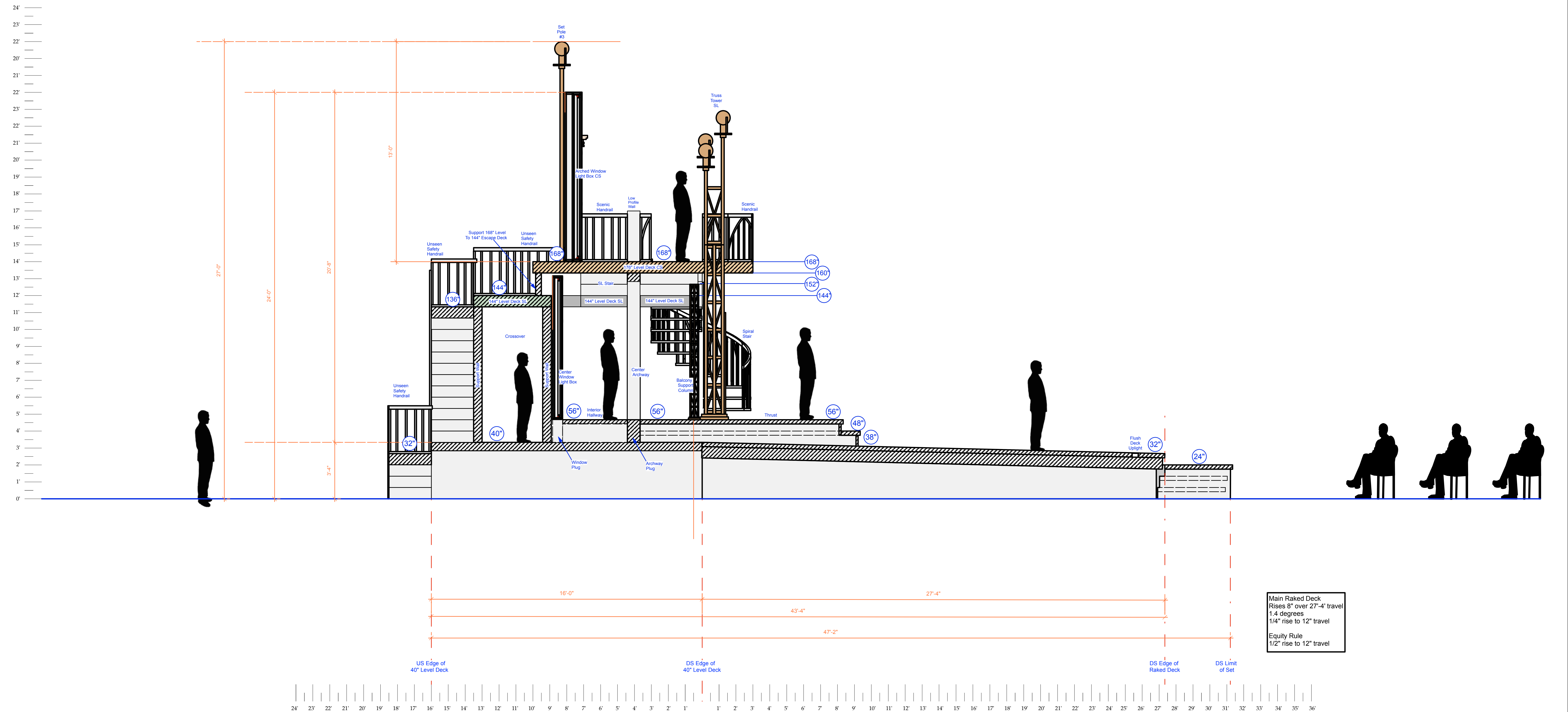
Expandable backstage platforming is not a component of 2020 installation but handrails and stairs should be removable / reconfigured and allow for future expanded backstage areas on both sides.

University of South Carolina		
	1	Indoor / Outdoor Touring Stage Shakespeare Festival Stage
	Scale 3/8"=1'-0"	Lower Level Ground Plan
	Date 11-20-19	Producer / Direction: Robert Richmond Festival Stage Design: Jim Hunter


19'
18'
17'
16'
15'
14'
13'
12'
11'
10'
9'
8'
7'
6'
5'
4'
3'
2'
1'
0'
1'
2'
3'
4'
5'
6'
7'
8'
9'
10'
11'
12'
13'
14'
15'
16'
17'
18'
19'
20'
21'
22'
23'
22'
21'
20'
24'
25'
26'
27'
28'

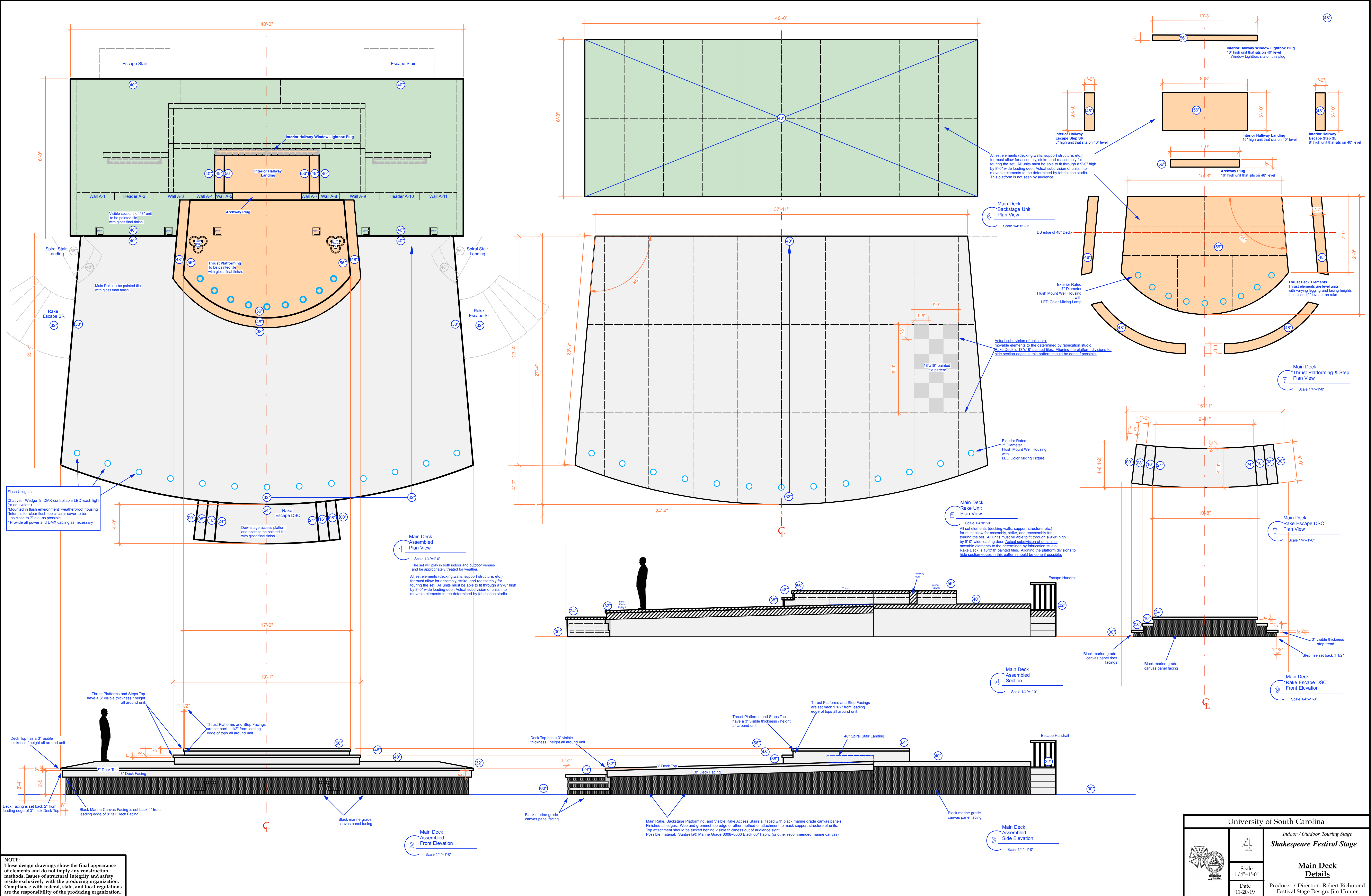
NOTE:
These design drawings show the final appearance of elements and do not imply any construction methods. Issues of structural integrity and safety reside exclusively with the producing organization. Compliance with federal, state, and local regulations are the responsibility of the producing organization.



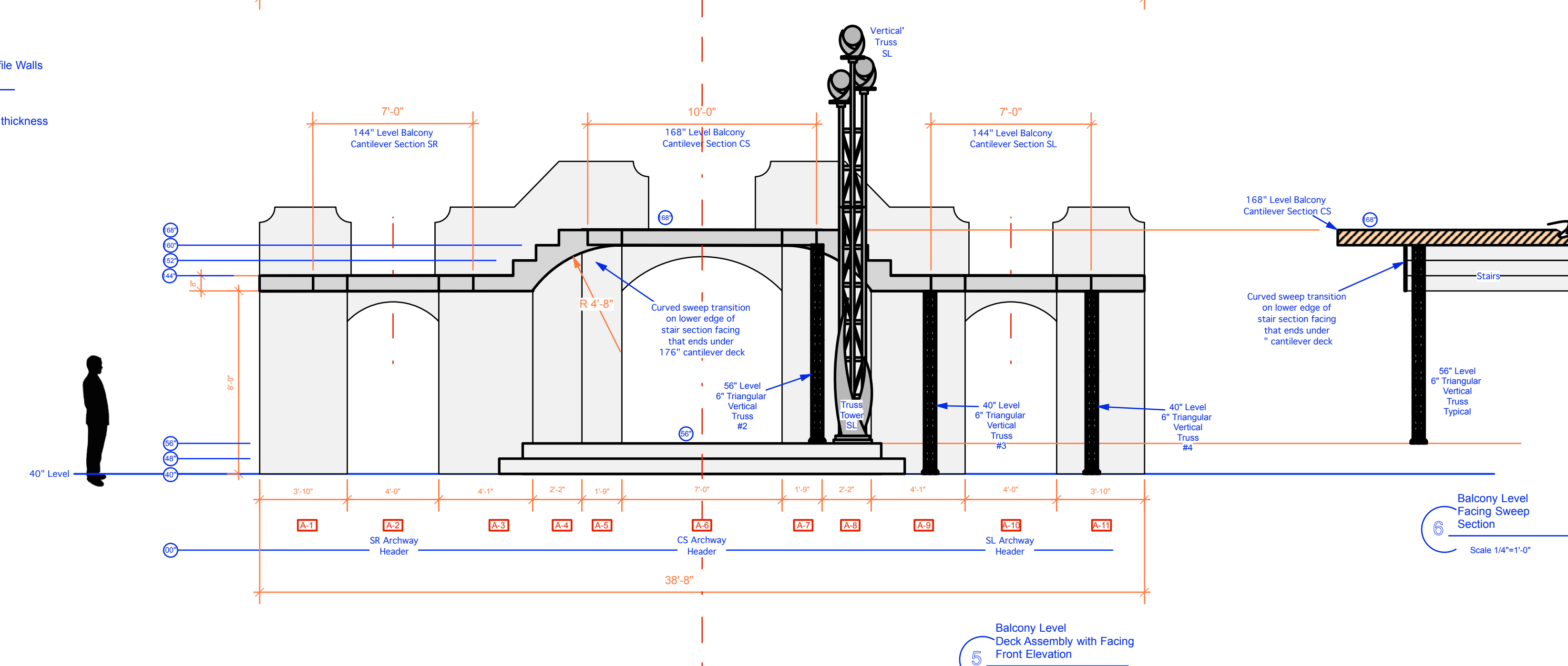
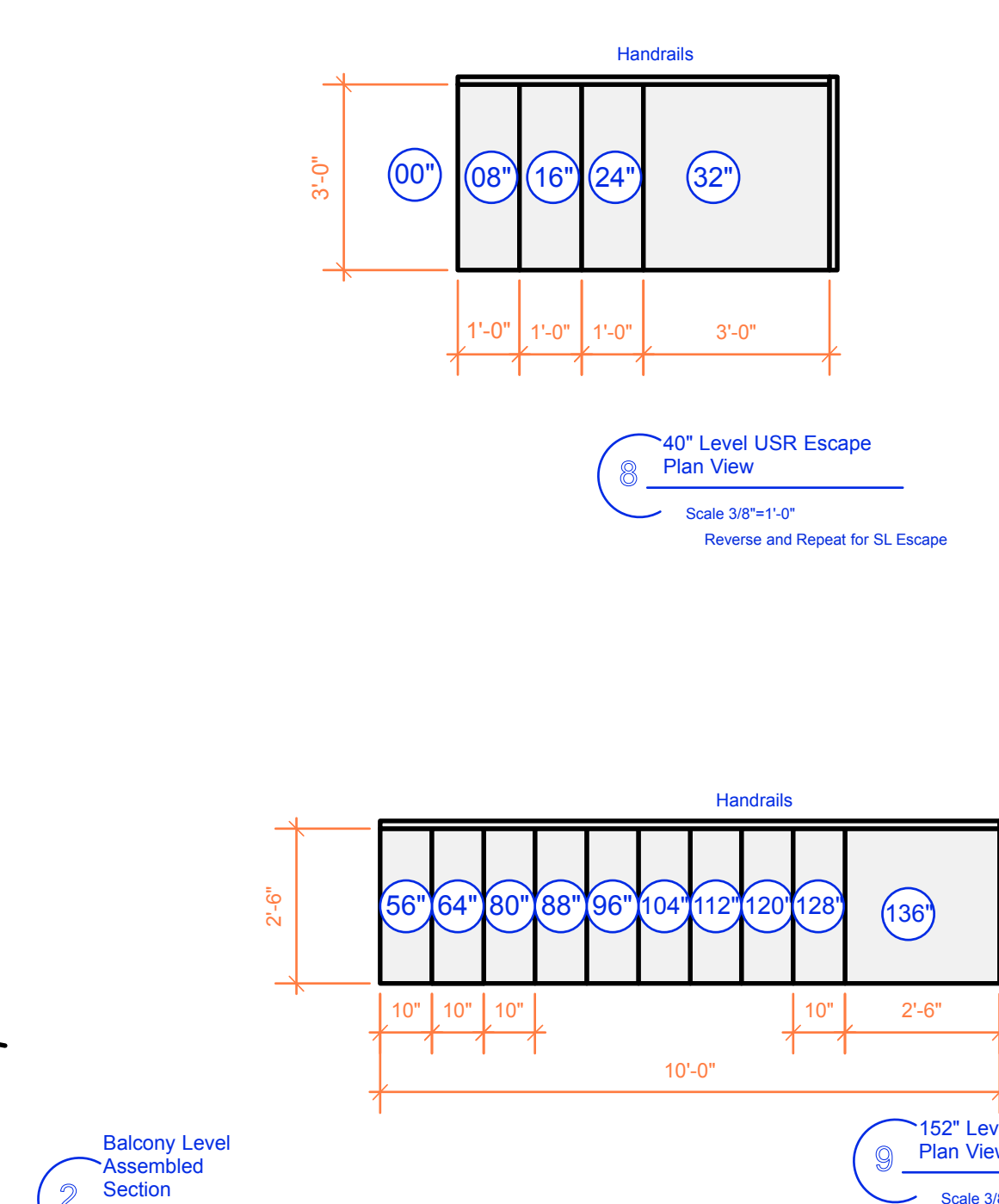
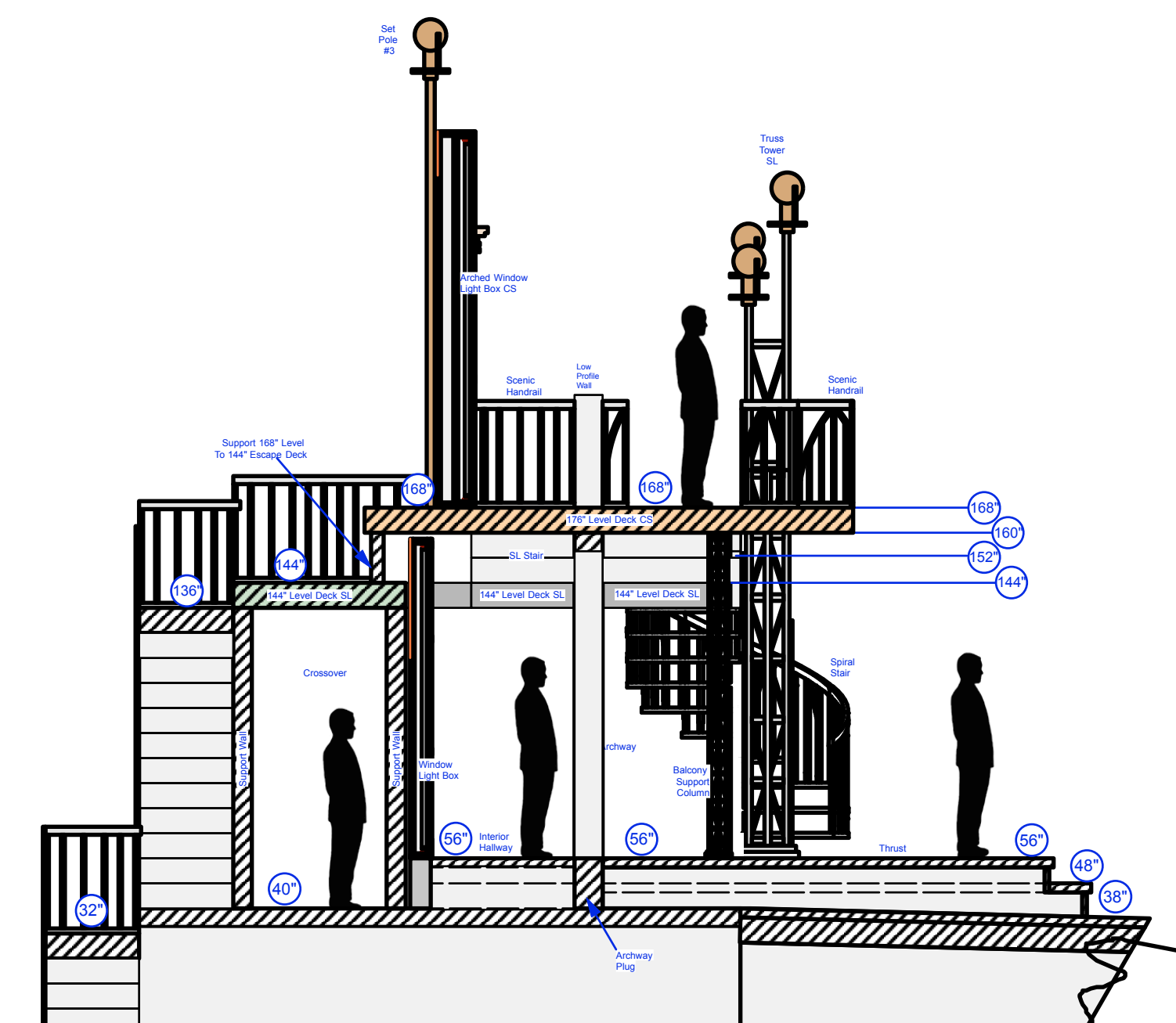
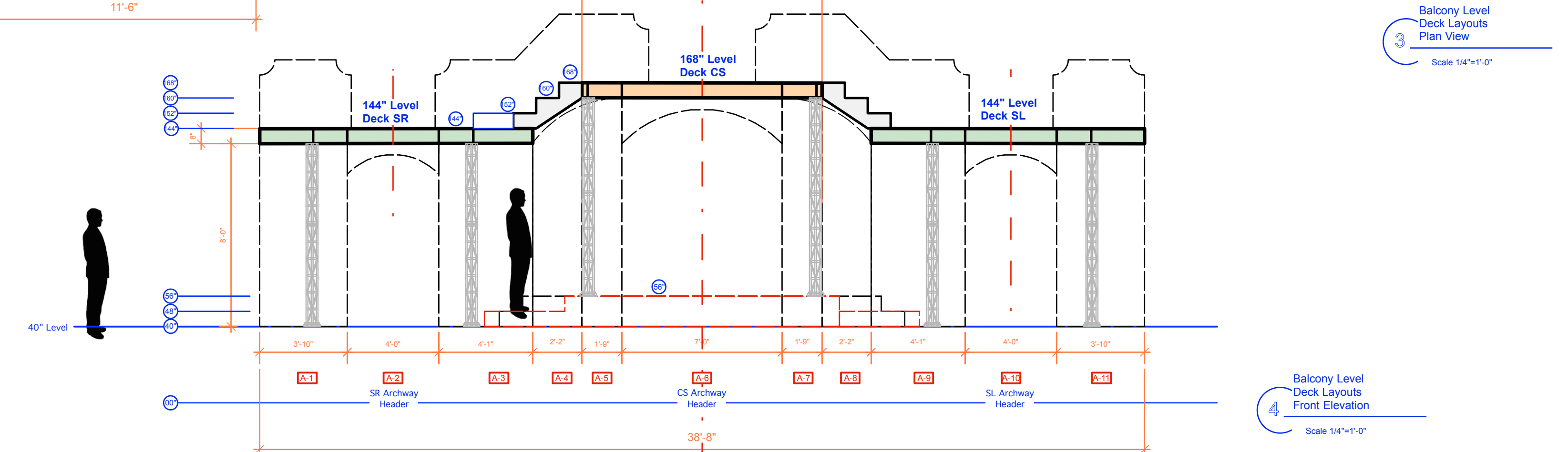
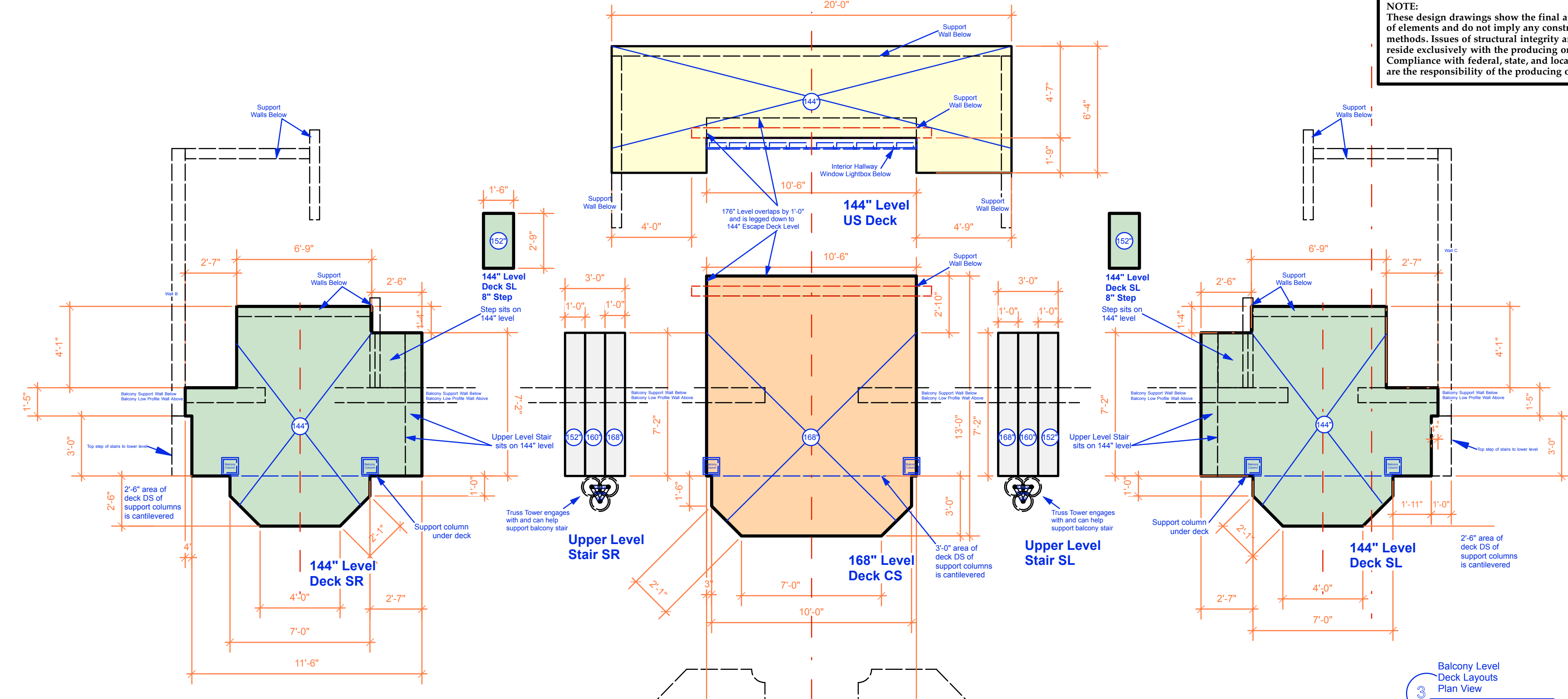
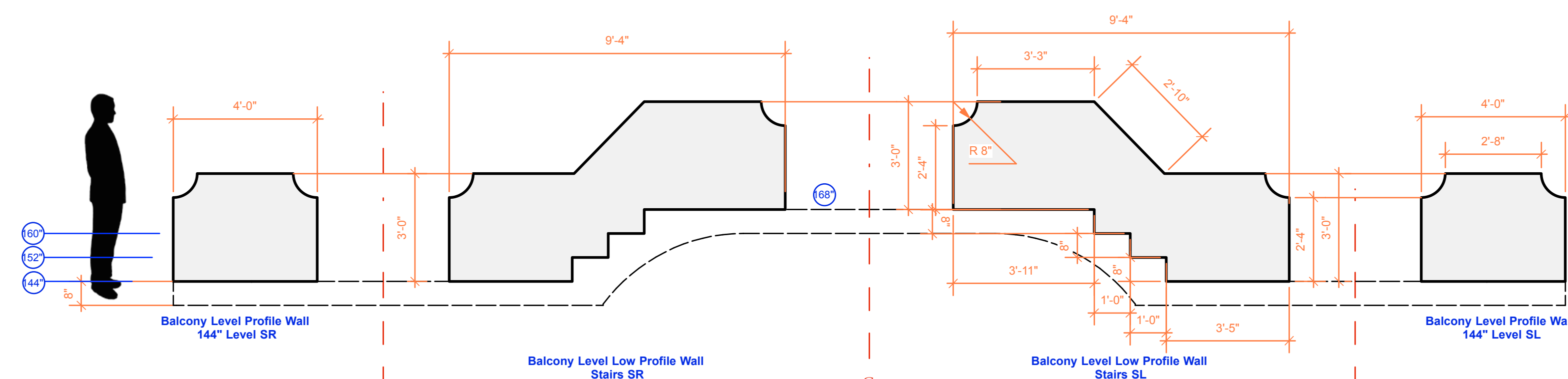
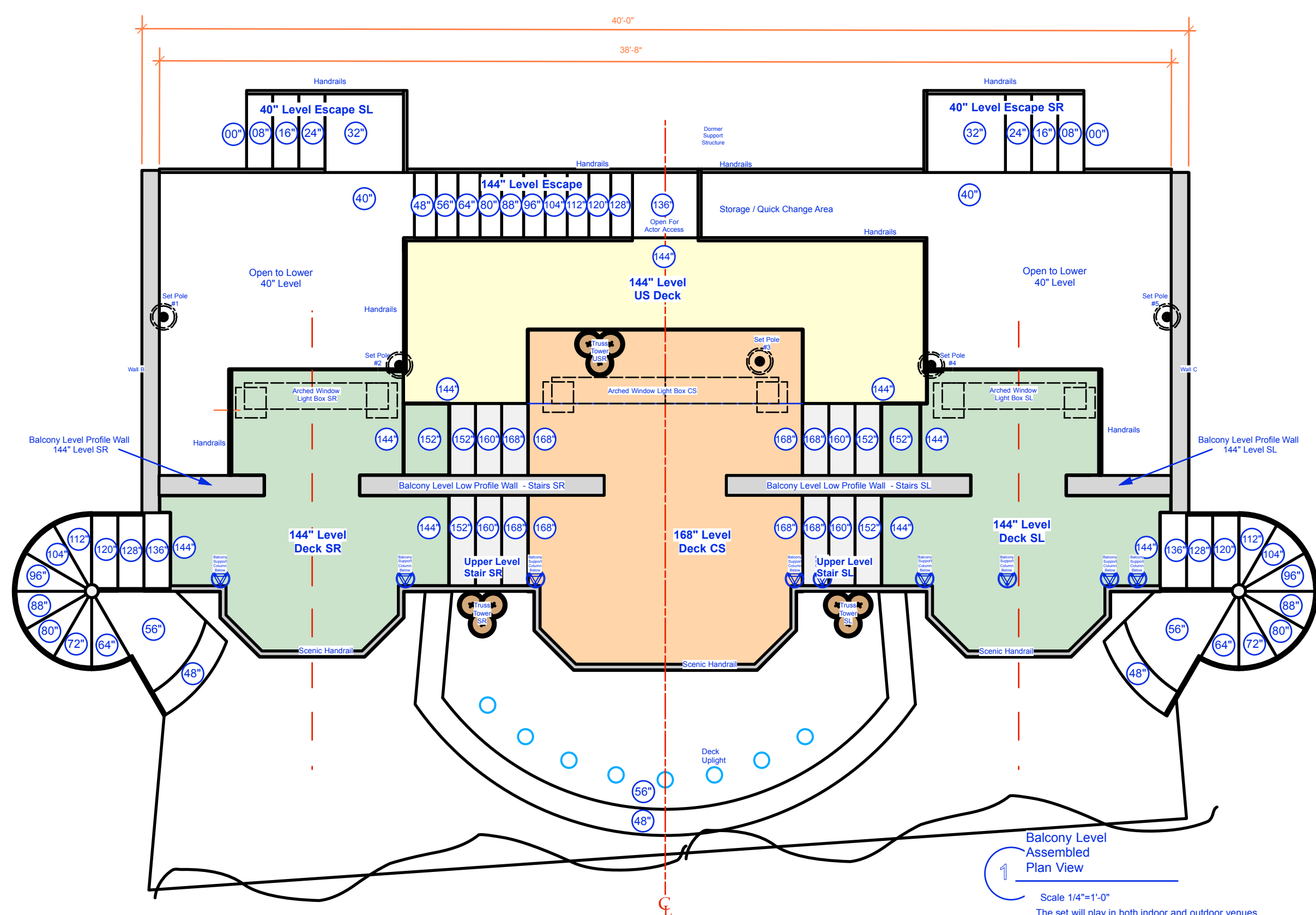


NOTE:
These design drawings show the final appearance of elements and do not imply any construction methods. Issues of structural integrity and safety reside exclusively with the producing organization. Compliance with federal, state, and local regulations are the responsibility of the producing organization.

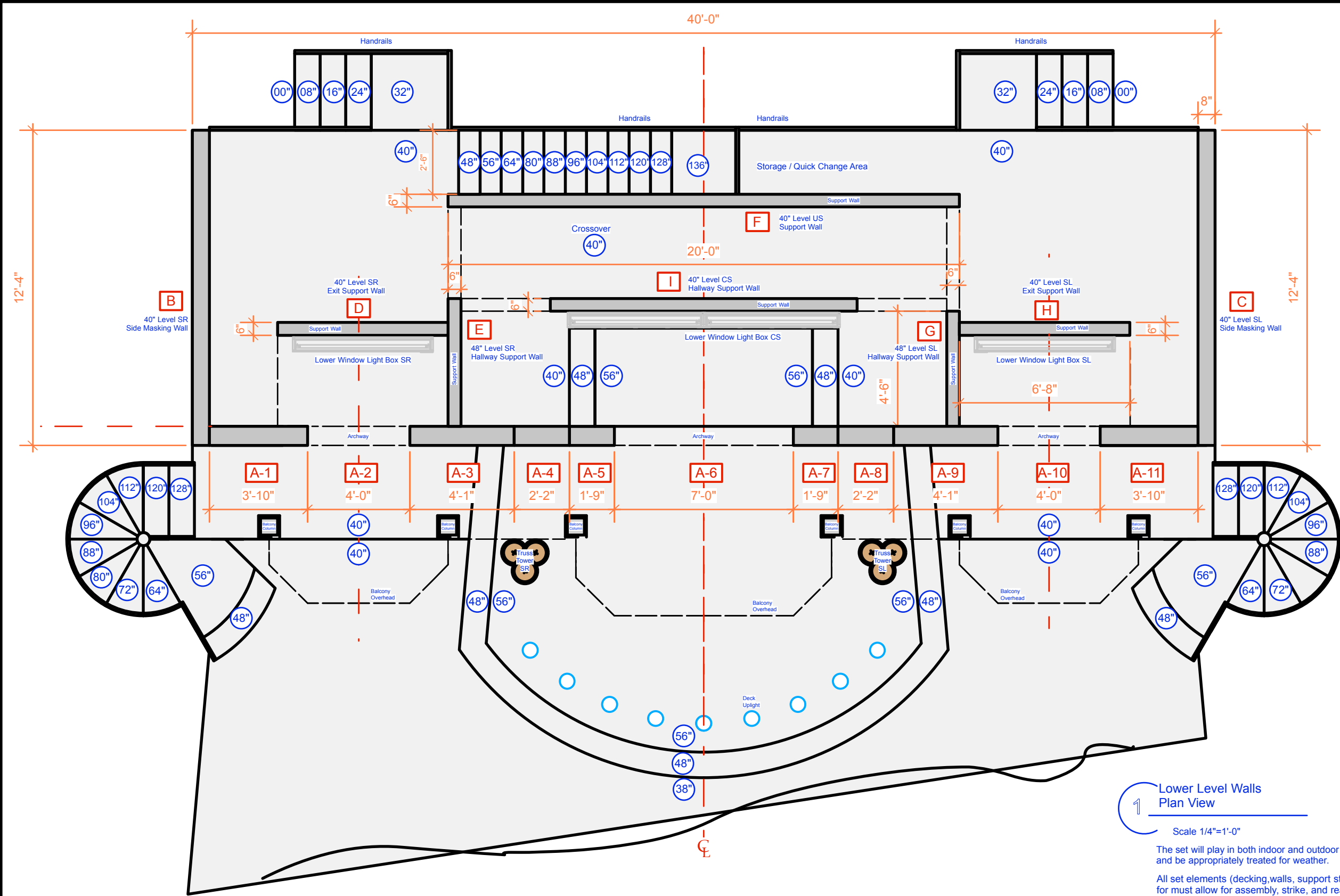
University of South Carolina			
	3	Indoor / Outdoor Touring Stage <i>Shakespeare Festival Stage</i>	
		<u>Centerline Section</u>	
	Scale 3/8"=1'-0"	Producer / Direction: Robert Richmond Festival Stage Design: Jim Hunter	
	Date 11-20-19		



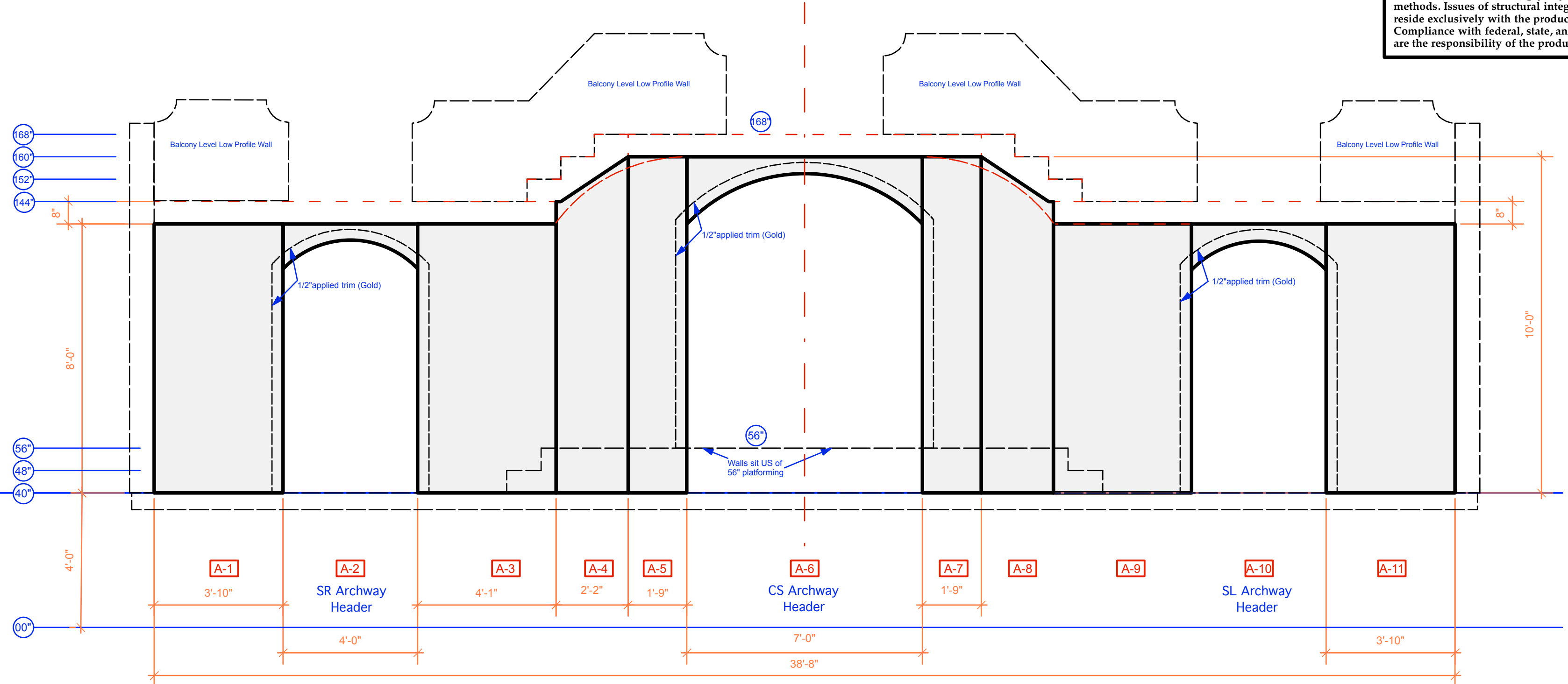
NOTE:
These design drawings show the final appearance of elements and do not imply any construction methods. Issues of structural integrity and safety reside exclusively with the producing organization. Compliance with federal, state, and local regulations are the responsibility of the producing organization.



NOTE:
These design drawings show the final appearance of elements and do not imply any construction methods. Issues of structural integrity and safety reside exclusively with the producing organization. Compliance with federal, state, and local regulations are the responsibility of the producing organization.

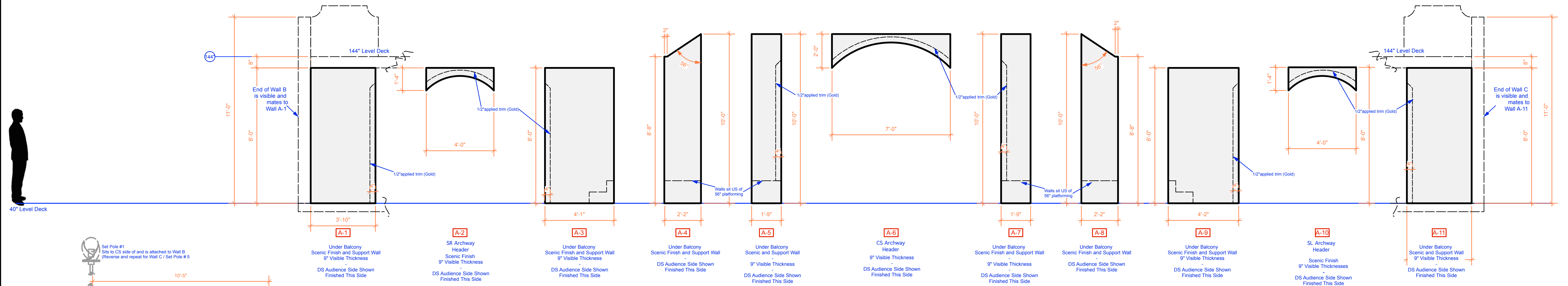


40" Level



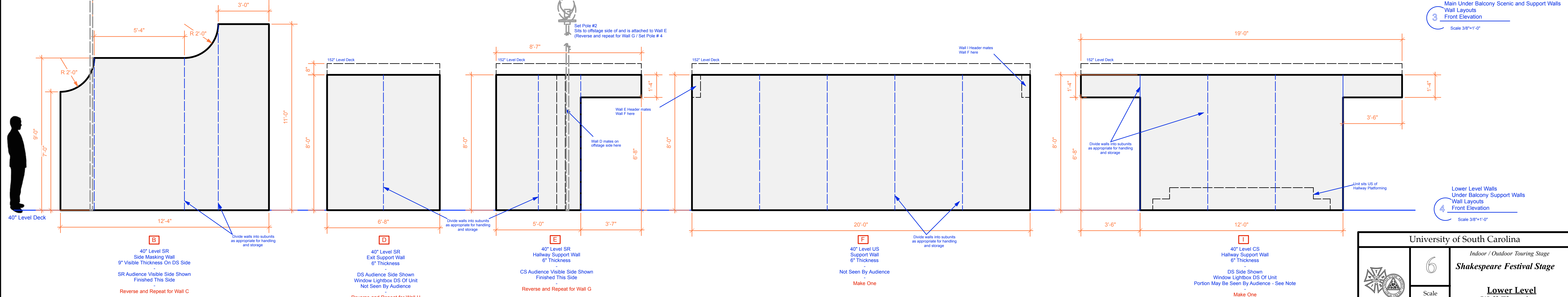
Lower Level Walls Main Under Balcony Scenic and Support Walls Assembled Front Elevation

Scale 3/8"=1'-0"



Lower Level Walls Main Under Balcony Scenic and Support Walls Wall Layouts Front Elevation

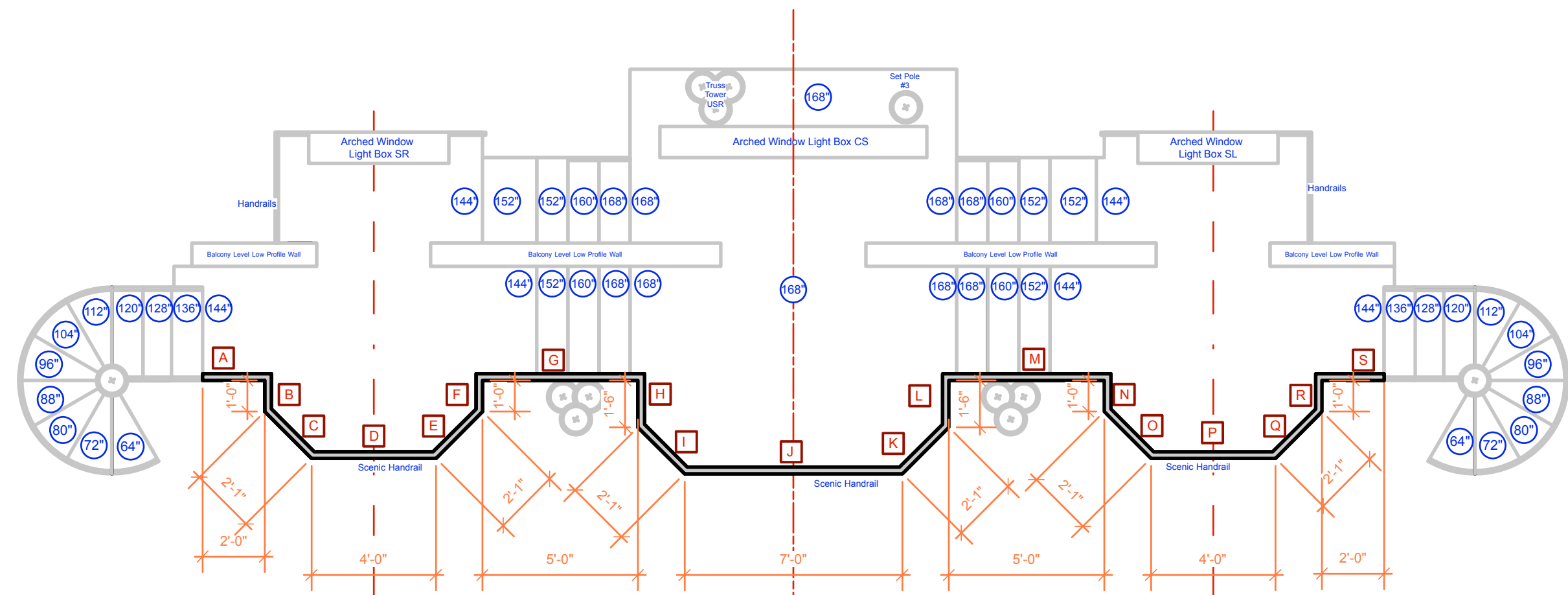
Scale 3/8"=1'-0"

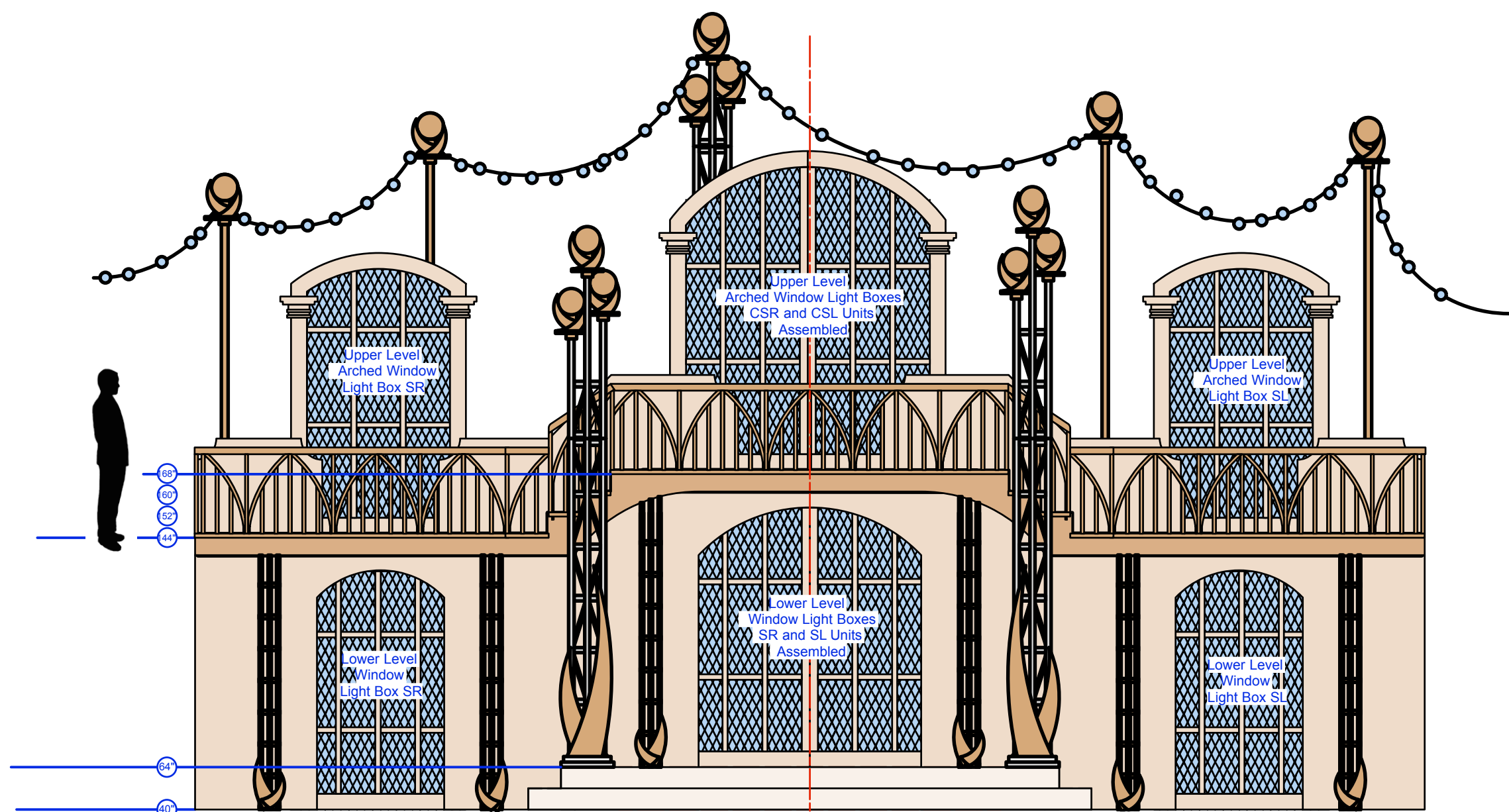


Lower Level Walls Under Balcony Support Walls Wall Layouts Front Elevation

Scale 3/8"=1'-0"

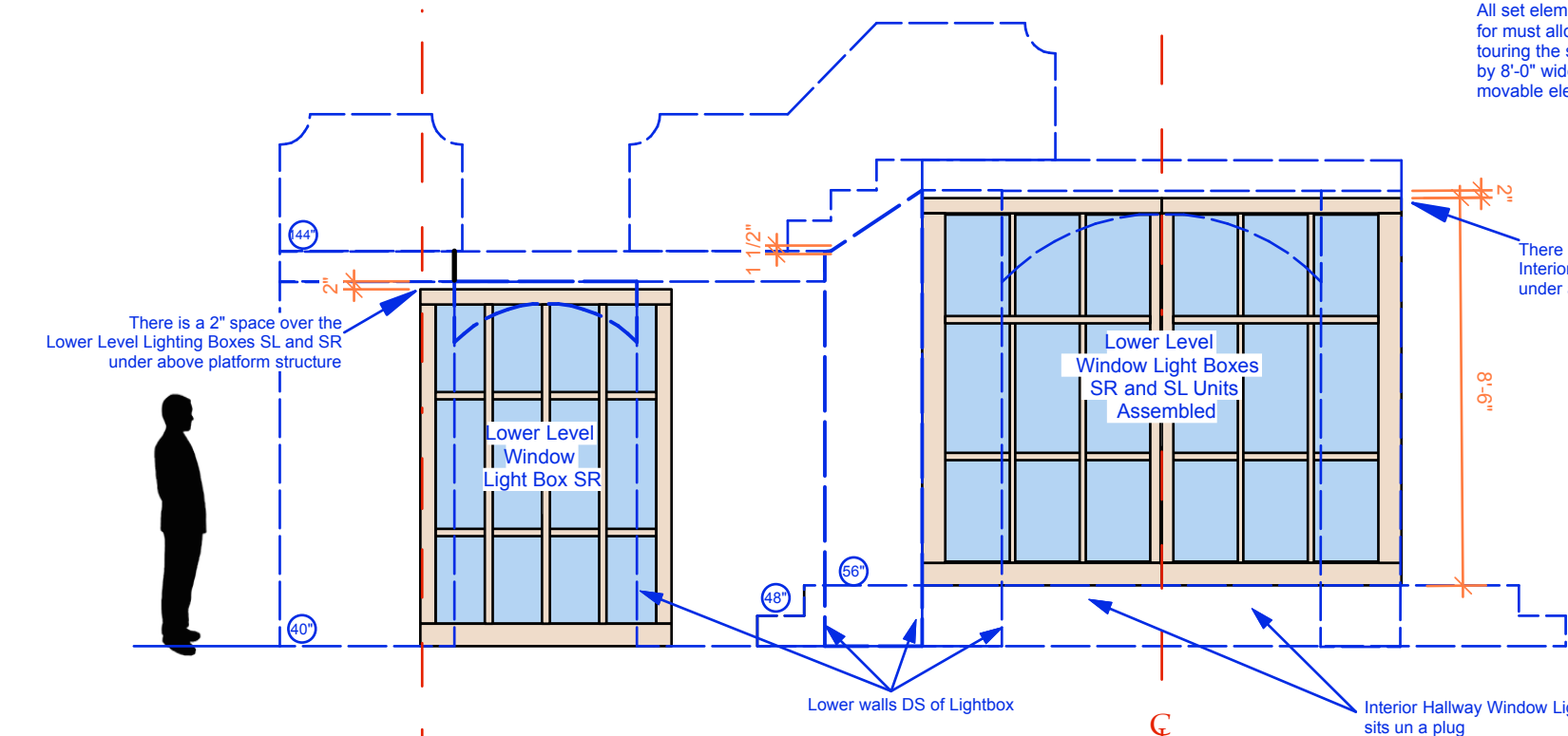
University of South Carolina	
	Indoor / Outdoor Touring Stage Shakespeare Festival Stage
6	Lower Level Wall Elevations
Scale See Notes	Producer / Direction: Robert Richmond Festival Stage Design: Jim Hunter
Date 11-20-19	



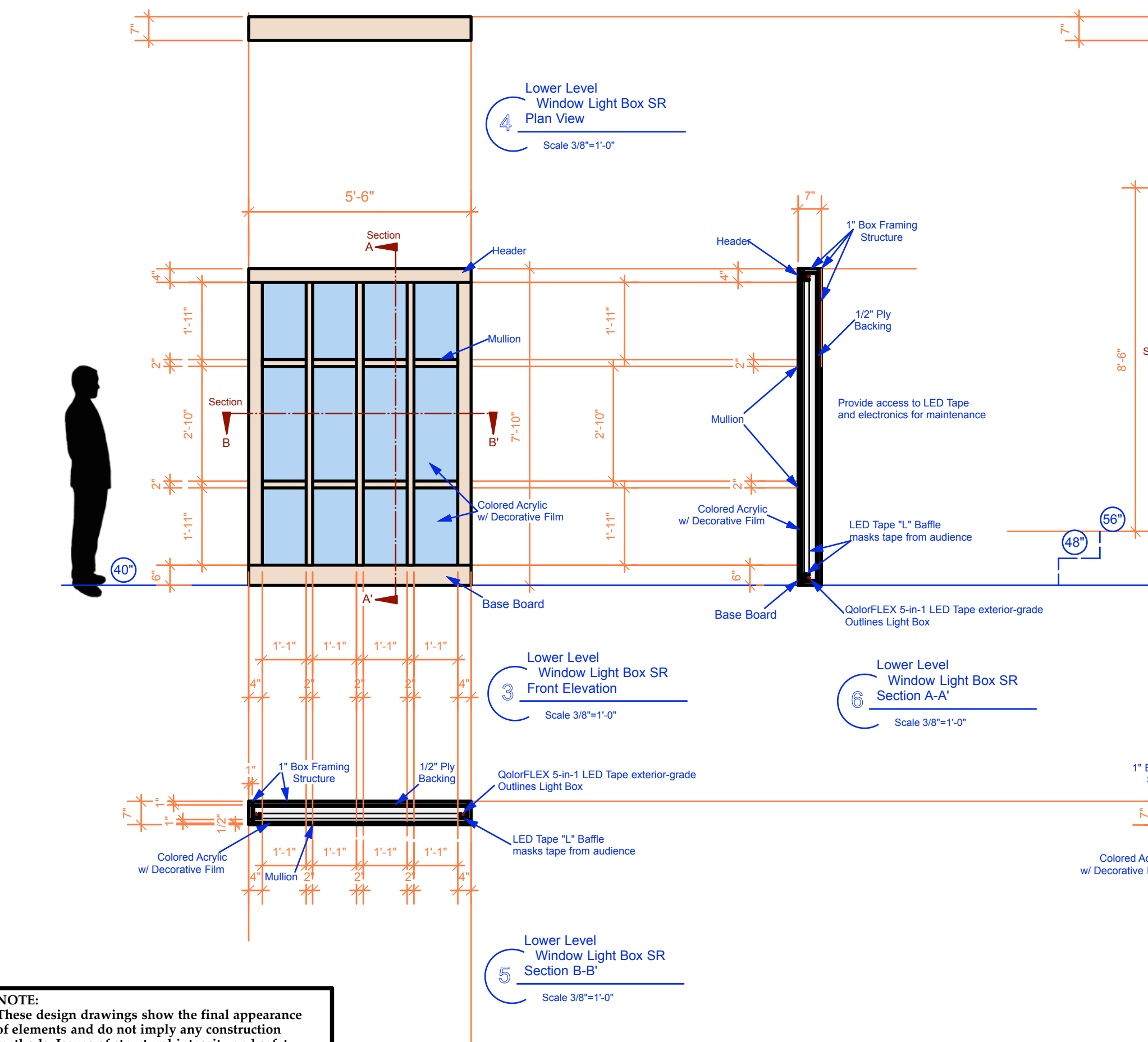


Window Light Boxes
Placement
Front Elevation
Scale 1/4"=1'-0"

The set will play in both indoor and outdoor venues and be appropriately treated for weather. All set elements (decking, walls, support structure, etc.) for must allow for assembly, strike, and reassembly for touring the set. All units must be able to fit through a 9'-0" high by 8'-0" wide loading door. Actual subdivision of units into movable elements to be determined by fabrication studio.



Lower Level Window Light Boxes
Placement Detail
Front Elevation
Scale 1/4"=1'-0"

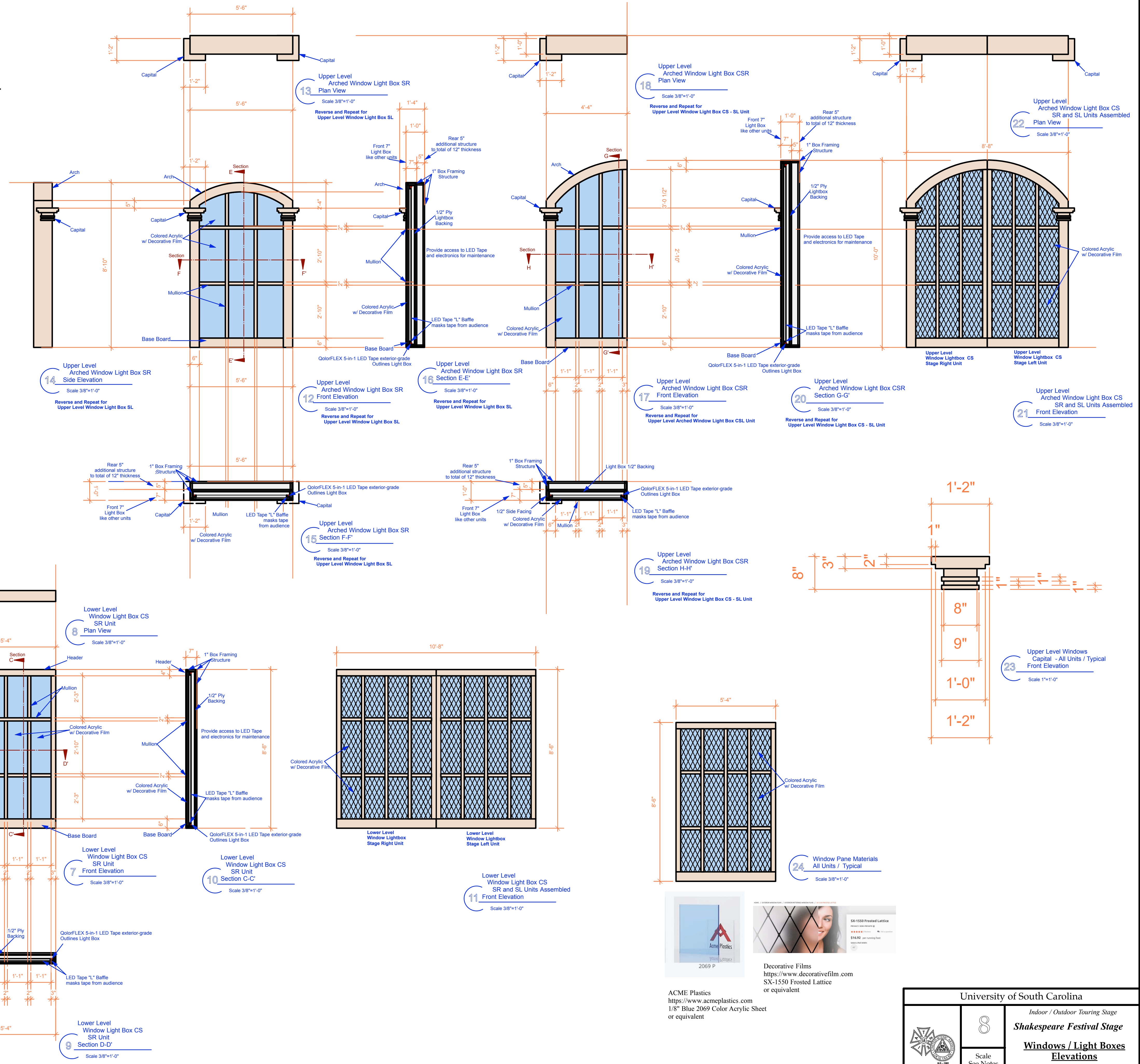


Lower Level Window Light Box SR
Plan View
Scale 3/8"=1'-0"

Lower Level Window Light Box SR
Front Elevation
Scale 3/8"=1'-0"

Lower Level Window Light Box SR
Section A-A'
Scale 3/8"=1'-0"

Lower Level Window Light Box SR
Section B-B'
Scale 3/8"=1'-0"



Upper Level Arch Window Light Box SR
Plan View
Scale 3/8"=1'-0"

Upper Level Arch Window Light Box SR
Section E-E'
Scale 3/8"=1'-0"

Upper Level Arch Window Light Box SR
Section F-F'
Scale 3/8"=1'-0"

Lower Level Window Light Box CS
SR Unit
Front Elevation
Scale 3/8"=1'-0"

Lower Level Window Light Box CS
SR Unit
Section D-D'
Scale 3/8"=1'-0"

Upper Level Arch Window Light Box CSR
Plan View
Scale 3/8"=1'-0"

Upper Level Arch Window Light Box CSR
Section G-G'
Scale 3/8"=1'-0"

Upper Level Arch Window Light Box CSR
Section H-H'
Scale 3/8"=1'-0"

Lower Level Window Light Box CS
SR and SL Units Assembled
Front Elevation
Scale 3/8"=1'-0"

Upper Level Arch Window Light Box CS
SR and SL Units Assembled
Plan View
Scale 3/8"=1'-0"

Upper Level Arch Window Light Box CS
SR and SL Units Assembled
Front Elevation
Scale 3/8"=1'-0"

Upper Level Windows
Capital - All Units / Typical
Front Elevation
Scale 1"=1'-0"

Window Pane Materials
All Units / Typical
Scale 3/8"=1'-0"

